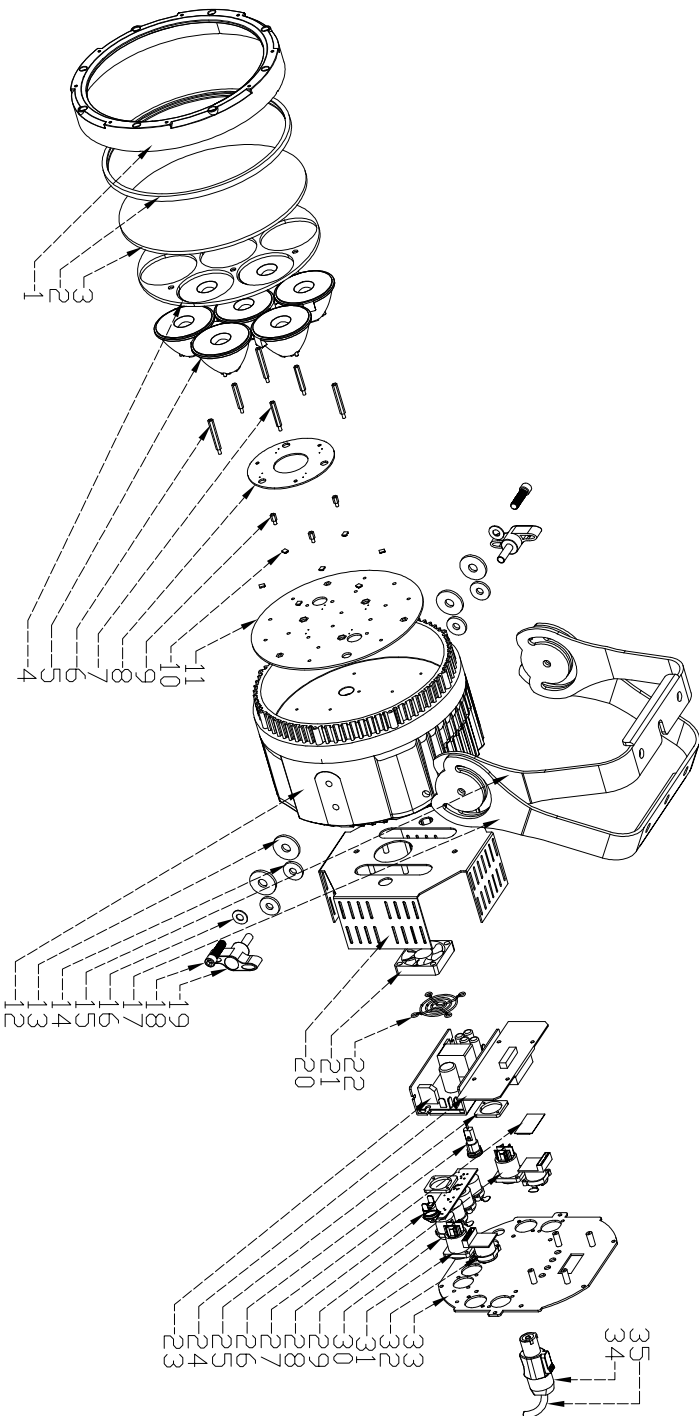


SN	PART CODE	DRAFT NO.	ITEM NO.	QTY
1	7060000058	LA3140-02	front cover	1
2	7030200019	LA3140-04	waterproof silicone ropeA	1
3	5070000012	LA3140-05	toughen grass	1
4	70102011028	YB30201-02	lens pressing plate	1
5	5030100015	ST0304-38	lens	7
6	7020300022		copper pillar1 M8*87.6	3
7	7020300020	YB30201-01B-001	copper pillar1 M8*80.6	3
8	8010057000		driver PCB	1
9	7020300000	PECS0349-2101-001	copper pillar1R short1	3
10	5020100021	LA3155-01	LED	7
11	8010056900	PBEA-157E-D	LED PCB	1
12	70601000338	YB30201-03C-001	Light housing	1
13	7020202005	YB30201-01	gasket:m 10.5*mm 18*2.6	4
14	7030200037		round washer:m 22h m 8h 3	4
15	70103000718	LA3159-28A-04	bracketA	1
16	7020200006		flat washer1 m 8*mm 17*1	2
17	70103000728	LA3159-28A-05	bracket B	1
18	7020001035		cup head screw1 M8X30	2
19	7020600002	LA3155-28A-03	"S" knobR M8h 25h	2
20	70102011048	YB30201-04	barndoor	1
21	5010000031		fans:DH50108	1
22	7020900000		fan filter1 50*50	1
23	5040000104	K26H-UP150S5	PSU	1
24	8010057100	YB30201-02A-001	display PCB	1
25	8061034900	LA3401-10	pressing plate	2
26	6120100002	R3-54B	fuse holder	1
27	5070100005	LA1114-12	fusel T1A/250V EHR0U	1
28	6060400000	KSD301	temp control switch	1
29	6120300000	NMC3MP-1	powercon out	1
30	8010027803	LW2108-05A-004	3P-5P straight XLR sockets with lock	1
31	6120200000	NMC3MP-1	powercon in	1
32	8010040400	LAR145-03A-001	R45 connection	2
33	70102011038	YB30201-03	cover plate	1
34	6121000000	NAC3PFA	power plug	1
35	5060202022	XC-DY-92	power cable for USA:14AWG/3C L=1830MM	1
	5060200011	XC-DY-32	power cable for europe:3*1.5MM6 L=1830MM	1



ELATION ACL PAR 200 [2015-10-25]

©ELATION PROFESSIONAL all rights reserved.

Information contained within this drawing is proprietary and confidential.

Any reproduction and/or distribution of any part of this drawing without the written consent by Elation Professional is strictly prohibited.

Diagrams and/or measurements herein subject to change without notice.